

DIRECTOR'S NOTES BY JOHN RUSCOE

In putting together a double bill of plays, it is always difficult to find short pieces which go well together. Should we look for a common theme, a contrast, or just put on a couple of good plays? I suppose you could extract some similarities between tonight's offerings; there are indeed contrasts; but, certainly, they are both very good plays and the *Criterion* is not the first theatre to pair Strindberg and Peter Shaffer.

AFTER MISS JULIE

I first saw August Strindberg's play, 'Miss Julie', in 1968 and I was so intrigued by this passionate struggle for power by the ruling and the serving class that I have wanted to work on it ever since, but I needed the right translation and the right actors to bring it to life. There are many translations and adaptations, but there are few which give this 19th century masterpiece the same impact it had on audiences when it was first performed. Patrick Marber has cleverly reworked it to a specific date in 1945, when the British Labour Party, led by Clement Attlee, won a landslide victory over Churchill's complacent Conservatives by promising a future in which there would be jobs, education and healthcare for all and a society which would no longer be class-led. Recent political events are perhaps a reminder of those ideals. In 'After Miss Julie', the battle for true equality is fought alongside the sexual tensions between mistress and servant and the outcome is never certain and will never be easy. So, 47 years on, I now believe I have the script and the actors to share my love of this play with you and hope that it will absorb you as it has me.

BLACK COMEDY

Since its first performance by the fledgling *National Theatre Company* in 1965, Shaffer's play has proved a popular farce around the world. What makes it unique is that it allows the audience to see in the dark whilst the characters on stage cannot see their hands in front of their faces. Add to this their need to impress important visitors and the urgency to return furniture to its rightful owner and you have the perfect ingredients for a farce - and what company of actors could resist that!

Tonight's programme has given us some exciting, hilarious and challenging times during rehearsals. We hope our efforts will provide you with a memorable evening at the *Criterion*.

Criterion Lottery Fund and Draw

Funds for the theatre are raised through our Lottery Fund. Please consider buying a number (or more than one) for the small sum of £5 per number per month. Please contact Mike Tooley on 024 7667 3789 or mike_tooley@hotmail.com for details.

Remember... you've got to be in it to win it!



Our next production:



Tarantara! Tarantara!

Book, Music and Lyrics by Ian Taylor
using songs by Gilbert and Sullivan

is presented by special arrangement with SAMUEL FRENCH LTD

Directed by Annie Woodward

Musical Direction by Bill Bosworth

5th to 12th December 2015

A delightfully witty musical entertainment which tells the story of the tempestuous creative partnership of the legendary Gilbert and Sullivan, the two strong-minded prodigious talents behind some of the greatest popular successes on the Victorian stage and which are still hugely popular today.

The show is fast-paced and tells a fascinating story, including many of the most popular songs in the Gilbert and Sullivan repertoire.

You certainly do not have to be a Gilbert & Sullivan fan to enjoy it, and it has appeal for audiences of all ages.

BOX OFFICE (Direct)

024 7667 5175

If you have any comments about your experience at The Criterion Theatre, please email us at comments@critteriontheatre.co.uk

Registered Charity 1161430

No photography or videoing allowed. The Criterion is a non-smoking theatre.



Printed by

ABC PRINT

BLACK COMEDY

BY PETER SHAFFER



AFTER MISS JULIE

BY PATRICK MARBER



By special arrangement with SAMUEL FRENCH LTD

programme

AFTER MISS JULIE

BY PATRICK MARBER

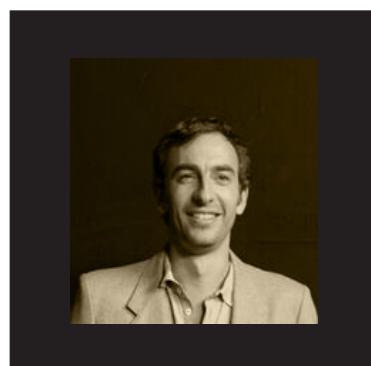
THE PLAY IS SET IN THE KITCHEN OF A LARGE COUNTRY HOUSE ON THE NIGHT OF 26 JULY 1945 (FOLLOWING THE FAMOUS LABOUR PARTY ELECTION VICTORY) AND THE MORNING AFTER.

CATHRYN BOWLER - CHRISTINE



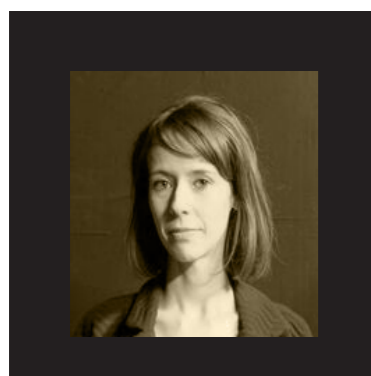
Cathryn joined the Criterion company in 2003 and has appeared in many productions since then including 'Single Spies', 'Bed Amongst the Lentils' ('Talking Heads') and 'Dancing at Lughnasa', and also 'Educating Rita' and 'The Real Thing' at the Loft Theatre, Leamington. In 'The 39 Steps', 'The Blue Room' and 'David Copperfield', Cathryn particularly enjoyed playing various contrasting roles which stands her in good stead for the rather different roles of Christine and Miss Furnival.

CHRIS FIRTH - JOHN



Chris is delighted to return to the Criterion stage after a 4 month hiatus, during which he attempted to focus on challenges including attempting 30 triathlons in 30 days. He failed. Miserably. Working with the group on "Julie" has been far more fun, yet equally taxing and he looks forward to a world of social equality which the play gives a tantalising glimpse of. Love all the people.

LUCY HAYTON - MISS JULIE



Lucy has appeared multiple times on the Criterion stage since 2002, most recently in 'Quartermaine's Terms', 'Proof' and 'The Thrill of Love'. Lucy has also tried her hand as an Assistant Director and Stage Manager and has helped out behind the scenes and behind the bar.

CAST

AFTER MISS JULIE

CHRISTINE CATHRYN BOWLER
JOHN CHRIS FIRTH
MISS JULIE LUCY HAYTON

BLACK COMEDY

BRINDSLEY MILLER PETE GILLAM
CAROL MELKETT LUCY HAYTON
MISS FURNIVAL CATHRYN BOWLER
COLONEL MELKETT PHIL REYNOLDS
HAROLD GORRINGE MATT SWEATMAN
SCHUPPANZIGH MATT BAXTER
CLEA NICOL CORTESE
MR BAMBERGER PETE BROOKS

CREW

DIRECTOR JOHN RUSCOE
STAGE MANAGER TONY CUTTIFORD
LIGHTING DESIGN KARL STAFFORD
LIGHTING OPERATION PAUL HARRISON, SIMON SHARPE, KARL STAFFORD
SOUND DAVE CORNISH I/C, SARAH BASFORD
SET DESIGN AND DRESSING KARL STAFFORD, EMMA WITHERS
SET BUILDING KARL STAFFORD I/C, LISA CORNWALL, TERRY CORNWALL, FRANCES DIXON, PAUL HARRISON, CHRIS HEARNON, PETE HORTON, LUKASZ NOWACKI, SAM PYLYP, TERRY RAHILLY, SIMON SHARPE, MANDY SUTTON, KEVIN WOODS
SET PAINTING EMMA WITHERS I/C, PAUL CHOKRAN, KATY JOHNSON, PETE HORTON, JOE MCAVOY-BOSS
PROPS CAROLYN ALCOCK, FRANCES DIXON, LESLEY RAHILLY
WARDROBE PAM COLEMAN I/C, DOREEN BELTON, LOUISE ROBINSON
PROMPT NICOLA GABRIEL
STATUE MARTIN WILLIS
PAINTINGS PAUL TATE
ARTWORK EMMA WITHERS

BLACK COMEDY

BY PETER SHAFFER

THE PLAY IS SET IN BRINDSLEY MILLER'S GROUND-FLOOR LONDON FLAT IN 1968.



PETE GILLAM - BRINDSLEY MILLER
Pete first stepped on stage in 2006 as the long lost father in 'Daisy Pulls It Off' and from then on has been active on and off stage ever since. He was last on stage in July as the faceless and faithless Sam Gavin in 'Grace'. Pete has heard there's a book running on what will break first: Brindsley or the furniture ...



**LUCY HAYTON
CAROL MELKETT**



**CATHRYN BOWLER
MISS FURNIVAL**



PHIL REYNOLDS - COLONEL MELKETT
Phil is enjoying playing a fictional character at the Criterion for the first time, having appeared as Guy Burgess in 'Single Spies', Noel Coward in 'Red Hot and Cole' and (a very long time ago) in 'Henry V' as the eponymous monarch. He has also appeared with the Talisman in Kenilworth and the Loft in Leamington.



MATT SWEATMAN - HAROLD GORRINGE
Matt has been at the Criterion since 1992 and usually been cast as a shouty American or a thug. Matt says getting in touch which his camp side has proved something of a challenge!



MATT BAXTER - SCHUPPANZIGH
Guten Abend. Matt has thoroughly enjoyed being part of 'Black Comedy'. Playing the cultivated and effervescent German, Schuppanzigh. Matt's last was as Gareth in Alan Ayckbourn's 'Neighbourhood Watch'. He's looking forward to appearing in more productions to come. So, on that note...Auf Wiedersehen!



NICOL CORTESE - CLEA
Nicol has been a member of the Criterion for 17 years. Nicol has played a range of roles at the Criterion, such as Anne Boleyn in 'Anne Boleyn', Young David and Agnes in 'David Copperfield', Vicky Martin in 'The Thrill of Love', Doll Tearsheet and Wart in 'Jack Falstaff' and most recently Miriam in 'Snake In The Grass'.



PETER BROOKS - MR BAMBERGER
Peter is a long standing member of the Criterion, having taken a wide variety of roles over almost 40 years. He has at last surpassed his smallest part to date (having committed suicide after the first ten minutes of 'Funny Peculiar'). Please stay to the end otherwise you will miss him!